



INSTRUCTIONS MANUAL

I. INTRODUCTION _____ PAGE 1

II. DESCRIPTION _____ PAGE 3

III. ASSEMBLY _____ PAGE 4

IV. ALKALINE OR RECHARGEABLE BATTERIES, BATTERY LIFE,
BATTERY LOW ALERT _____ PAGE 6

V. CONTROLS _____ PAGE 8

SENSITIVITY, START *P. 8*
DISCRIMINATION *P. 9*
IRON LEVEL *P. 10*
SILENCER *P. 11*
GROUND *P. 11*

VI. MULTI-TONE INFORMATION _____ PAGE 12

VII. DETECTING TECHNIQUES _____ PAGE 13

VIII. CARE INSTRUCTIONS _____ PAGE 14

IX. TROUBLE SHOOTING PROBLEMS _____ PAGE 15

X. ADVICE TO DETECTORISTS _____ PAGE 16

XI. SPECIFICATIONS _____ PAGE 17

XII. XP ACCESSORIES _____ PAGE 18

WARRANTY CONDITIONS

I. INTRODUCTION

CONGRATULATIONS ON PURCHASING AN XP METAL DETECTOR AND WELCOME TO THE WORLD OF RESEARCH AND EXPLORATION !

You have invested in a high tech detector with extreme performance, designed and developed in France, therefore, you are taking part in the development and research in the field of metal detecting undertaken by our company, we thank you for that.

XP metal detectors are a clever combination of analog/digital technology and benefit from the latest advances in the field. Our knowledge of that technology has led us to integrate a new microprocessor that analyses discrimination signals. This fast microprocessor gives the **Gold Maxx** increased power and stability for the detection of weak signals, as well as a better rejection of junk targets.

The **Gold Maxx** is an exceptional detector to find small targets in difficult type of soil (mineralized*).

Its frequency (**18 kHz**), makes it a very sensitive to targets that are usually very difficult to detect, like hammered coins, gold nuggets, minims and all other small objects.

With the Gold Maxx you will find more than gold !

Flexibility in the set up of discrimination adjustments allows you to fit in with the ground you detect, thanks to the new Multi-Tone mode and the **IRON LEVEL** control.

We chose **instantaneous sound signalling**, rather than an LCD display because of the extraordinary ability of the human ear to analyse compared to an LCD display.

LCD displays cannot respond in real time and do not capture weak signals that are too brief or too close to other signals

***Gold Maxx sound signalling provides real-time output of
the most imperceptible signal.***


***To appreciate the improved depth of detection, you should perform the tests
in the ground.***

** We use the term "mineralized" soil to refer to soil that is naturally iron infested or has become infested due to intense human occupancy (ferrous debris or pottery). The term does not include seawater (salt water) , which is not magnetic but is conductive.*

I. INTRODUCTION


Our detectors use wide scan search heads (Double D), because this coil geometry allows a better ground penetration.

The optional elliptical 5" x 10" search coil will improve the selectivity on iron infested areas, this is the best complementary coil for the Gold Maxx.

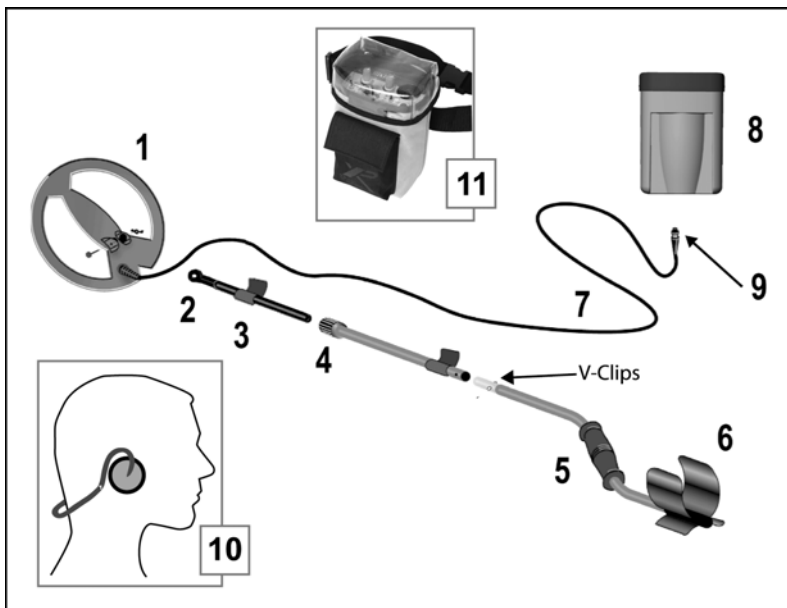
 *The Gold Maxx search heads are not compatible with those of other XP detectors because of their specific frequency (18kHz).*

You will appreciate the sturdiness and the manufacturing quality of our equipment. Because a metal detector is generally used in extreme conditions, we have given full attention to the most sensitive parts. **Gold Maxx** is been developed and manufactured with quality components and material, thus ensuring your XP detector a maximum useful life.

- **New XP metal connector** : designed to resist movement failures, moulded, *completely waterproof.*
- New **Cable**, double electromagnetic shield, very resistant, designed to resist movement failures.
- Robust, waterproof and lightened search coil,
- **Very resistant** polypropylene armrest,
- 3 Piece stem
- Fibreglass lower stem.
- Provided with Hipmount bag, backphone and coil cover.

 *Before using your Gold Maxx for the first time, we recommend that you read this instruction manual carefully in order to make full use of its abilities.*

II. DESCRIPTION



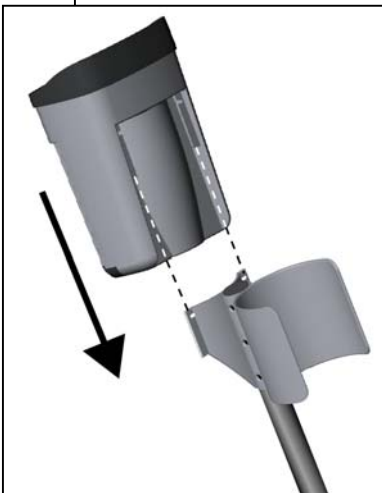
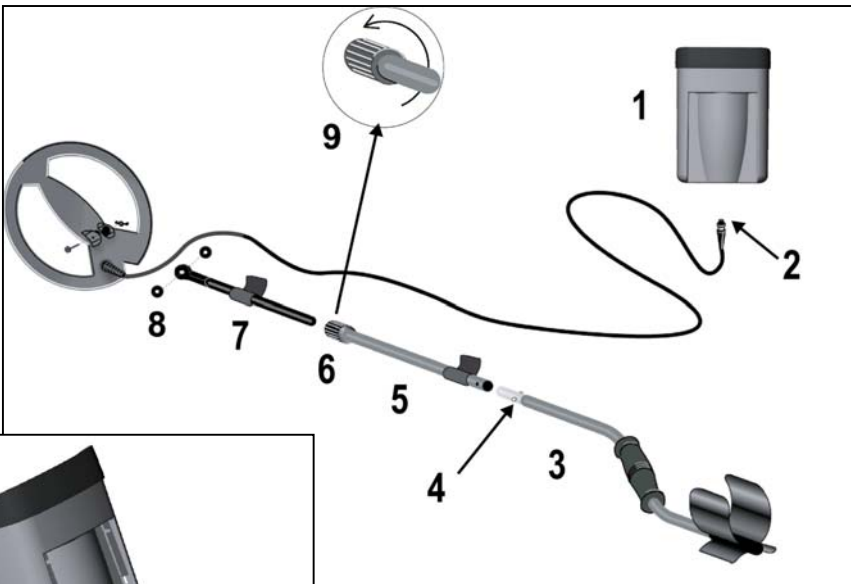
- 1 - Robust, waterproof search coil. Diam.9" (22.5 cm), provided with coil cover.
- 2 - High impact plastic end.
- 3 - Fibreglass lower stem
- 4 - Twist lock
- 5 - Comfortable foam handle
- 6 - Impact resistant polypropylene armrest
- 7 - Strong cable, designed to resist movement failures.
- 8 - ABS electronics box. For maximum comfort, the box is worn hipmounted. It can also be fixed to the armrest thanks to slides specially designed for that purpose.
- 9 - Waterproof connector, metal and plastic.
- 10 - Headphones FX-01
- 11 - Hipmount bag.

III. ASSEMBLY

The assembly of your detector will only take you a few seconds.

Put the shaft together as shown on the diagram.

1. Press the 2 shafts (3) and (5) one towards the other to help the spring clips (4) locate themselves.
2. The twist lock (6) is used to stop the movement of the fiberglass tube (7) inside the aluminium shaft (5). Release it before inserting the fiberglass tube and then lock it without forcing too much as shown on the diagram 9 once it is inserted at the right length.
3. Put the 2 rubber washers on each side of the plastic end (8). To facilitate the insertion you can dampen the rubber disc. Insert the plastic end on to the search head and screw the nylon bolt through the hole, lastly attaching the nylon nut.
4. Wind the cable around the shaft.



5. The electronic box (1) goes under the armrest. To fix it, insert the 2 wings of the armrest in the slides of the electronic box, as indicated on the opposite diagram.

III. ASSEMBLY



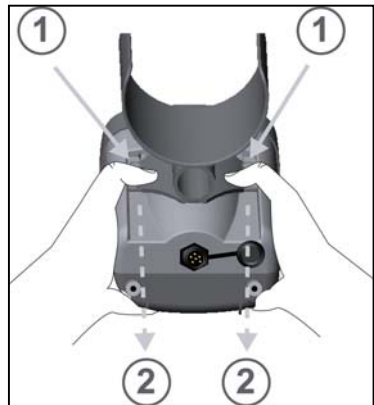
6. Once the control box is in place under the armrest, insert the connector (female) (2) in its panel connector (male), lock it, the connector is now watertight.

The control box is now fixed under the armrest as indicated on the opposite diagram.

❗ *Disassembling*

To get out the control box of armrest, proceed as indicated below.

1. Put your hands around the control box and press slightly with your thumbs on the sides of the armrest ①.
2. Whilst you keep the pressure on, slip the armrest off, and remove completely the control box from the armrest ②.



❗ *Optional accessory*

With this optional accessory (XP- 100) you can fix the electronic box on the shaft in front of the handle.



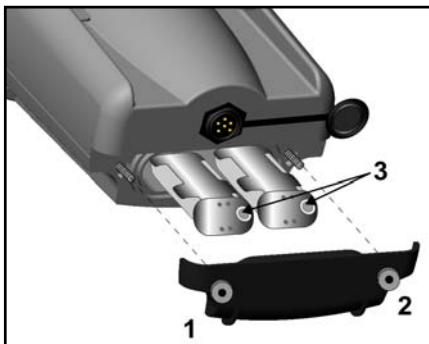
IV. ALKALINE OR RECHARGEABLE BATTERY, BATTERY LIFE, BATTERY LOW ALERT

ALKALINE BATTERY

Gold Maxx is powered with 12 volts from 8 AA Alkaline batteries split in 2 battery holders, 4 batteries each.

Pay close attention to the batteries + - polarity before inserting the battery holders in the electronic box.

The metal rivets (3) of the batteries holder must be on the right. Screw the nuts 1 and 2 to close the batteries lid.



In the event of nonprolonged use, remove the batteries from the detector.

BATTERY

A rechargeable battery pack and a charger will allow you to power your detector.

The insertion of the rechargeable battery pack is similar to the Alkaline batteries pack.

Recharging the batteries can be done in a very simple way:

Always turn off the detector before recharging batteries. Remove the search coil connector of the electronic box and insert the charger instead. **12 to 15 hours are necessary to have a full charge.**

- ⇒ Avoid leaving the batteries recharging for more than 20 hours.
- ⇒ Do not recharge your batteries unnecessarily but preferably when fully discharged.
- ⇒ It is advised to discharge the batteries completely every 3 or 4 charges (by leaving for example your detector on for a few hours after the battery low alert signal).

WARNING! *Before inserting your charger, check that you are not recharging Alkaline batteries*

IV. ALKALINE OR RECHARGEABLE BATTERY, BATTERY LIFE, BATTERY LOW ALERT



BATTERY LIFE

Alkaline batteries
Batteries

about 70 hours with headphones.
about 20 hours with headphones.



BATTERY LOW ALERT

When the battery voltage is too low to power the detector, you will hear a series of beeps like an alarm.

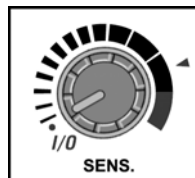
You must change the batteries soon.

V. CONTROLS

SENSITIVITY, I/O SWITCH

Turn the machine on with the **SENSITIVITY I/O** control.

You will hear some quick "beeps" which will tell you that the detector is correctly operating.



The sensitivity level adjusts the detection depth and the stability of your detector. Adjust it according to the surroundings so that you don't get false signals.

In Multi-Tone mode, you will improve the target identification by reducing the sensitivity level a little bit.



For improved sensitivity, after the startup beeps it is best to wait with the search head in the air, for five seconds, at a safe distance from radio interference.

Quick and Easy start

If you are in a hurry to try your detector, set all the controls to the red arrow, DISC potentiometer on Multi-Tones (switched off). The detector is then set up to search for non-ferrous metals.

You will hear some quick "beeps" which will tell you that the detector is working correctly.

For improved sensitivity, after the startup beeps it is best to wait with the search head in the air, for five seconds, at a safe distance from radio interference.

Then you can detect. **Good luck !**



Avoid testing your detector inside your house or in shops because you can encounter a lot of metallic and electromagnetic interference (reinforced concrete, fluorescent lights, metallic girder).

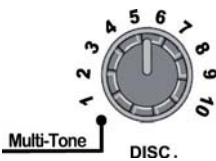
V. CONTROLS



DISCRIMINATION

The **Gold Maxx** gives you the choice between two modes : Mono-Tone or Multi -Tone.
The Multi-Tone mode signals different metals by giving different tones: Low, Medium, High.

The **DISC** control allows you to select either the Mono-Tone or Multi-Tone mode:



DISC control in position 1 to 10 = Mono-Tone mode

In this position the Multi-Tone mode and the **IRON LEVEL** control are deactivated. In this case, the detector works like a **conventional Mono-Tone** detector, the **DISC** control lets you **adjust the discrimination** level from 1 to 10.

Iron discrimination is done between 5 - 6 of the disc. potentiometer. Higher level will reject aluminium foil.



DISC control in position 0 (switched off)= Multi-Tone mode
activated: search in **all metal** mode with different tones.

In this mode, you can choose between 2 or 3 tones with the left switch and adjust the **IRON LEVEL** control.

V. CONTROLS



SWITCH 2 TONE / 3 TONE

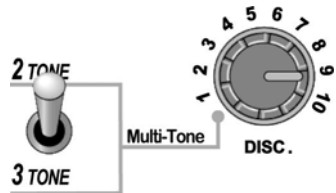
In Multi -Tone mode this switch allows you to select different signalling based on either 2 or 3 tones.

► 2 TONE : Low / Medium

- **Low** : Iron target
- **Medium** : All metal except iron.

► 3 TONE : Low / Medium / High

- **Low** : Iron target
- **Medium** : Aluminium foil, little trash, small objects etc...
- **High** : Coins, jewels (large) and all large targets.



This control works only in Multi-Tone mode. It allows you to adjust the audio level of the low tone (iron signals).

- **Min.** = iron detection is deactivated.
- **Max.** = the low tone (iron object) will have an equivalent level to the Medium/High tones.
- **Intermediate levels** will allow you to adapt to the various ground conditions.



V. CONTROLS

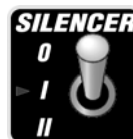
SILENCER

The silencer can limit false signals caused by iron. Use position **I** or **II** if you desired a quieter search. Silencer in position **II** will allow to get used to **Gold Maxx** faster and will improve iron rejection.

0 : Silencer OFF

I : Silencer (advised position)

II : Silencer X 2



Silencer in position **0** or **I** will enable you to find the decent targets which are close to ferrous targets.

Position **I** or **II** is also a very useful setting in the **Multi-Tone** mode, since it increases the detector's ability in the detection of ferrous objects and reduces its differences between low and medium pitches.

GROUND

With this control you can correct ground effects and more accurately reject ferrous minerals or any pottery containing iron oxides.



If you are prospecting on grounds loaded with magnetic stones (hot rocks), it might be a good idea to keep a sample of these stones on you to adjust your detector before detecting this type of ground. You only need to move a magnetic stone in front of the search coil turning slowly the potentiometer **GROUND** control from left to right so as to obtain a total rejection of the stone.

If the mineralization is too scattered, sweep the head on the ground and turn the control progressively from left to right in order to get a good stable detector. On mineralised grounds, these procedures will optimise your searches.

If you find your detector unstable while detecting, don't hesitate to repeat these steps to reset the detection parameters.



For maximum depth detection, do not turn this setting towards the right more than necessary. The red arrow indicates a basic position suitable for most ground.

VI. MULTI-TONE INFORMATION

In Multi-Tone mode the signal tones vary depending upon the object found. The pitch of signal depends upon conductivity, the higher the conductivity, the higher the pitch.

Iron has a very special signature that can be **recognised easily**. We have assigned it a **low-pitched** sound together with a volume setting (Iron Level) so that you can make the tone more or less conspicuous. The volume setting only affects the low-pitched tone (which has been assigned to iron).

This operating mode allows for improved analysis and understanding of the detected area, e.g. in order to find areas of former human occupancy. It also facilitates recognition of large ferrous objects (such as old weapons). Everybody will find a use for it.



Certain types of moist ground with a low mineral content may also trigger a low-pitched sound. The Iron Level setting may reduce or entirely eliminate that phenomenon related to the 18 kHz detector frequency.

On certain types of ground, especially those contaminated by copper sporting rifle cartridges or little pieces of aluminum foil, **Gold Maxx** will can signal the presence of debris by means of a **medium-pitched** tone, whereas as **decent targets** will trigger a **high-pitched** sound. It is up to the user to decide whether or not to dig, depending on how promising the area is, the type of target he or she is looking for and the density of rubbish, since certain small "decent" targets, such as very small coins, may also trigger a medium sound.

In addition to these three basic tones, **Gold Maxx** has another advantageous feature : it can produce several different tones **simultaneously** for targets in intermediate categories. Your ear will eventually grow accustomed to this abundance of sounds.

Certain medium-sized ferrous masses that are usually hard to identify are signaled by a simultaneous low/medium/high pitch (except for very large ferrous masses, of course, which generate a high pitch). It takes a little bit of practice to accustom your ear to the various tones.

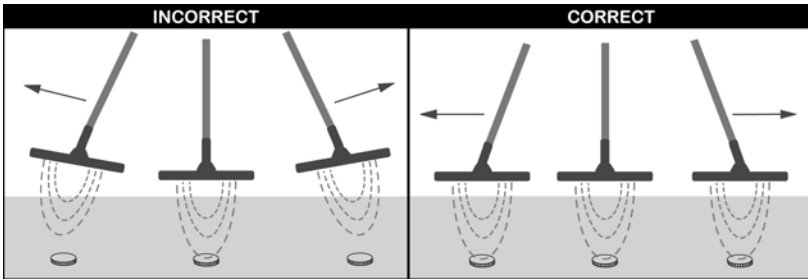
If the multiple tones bother you, you can disable that mode and start using **Gold Maxx** in the monotone mode as a conventional detector. To do so, set the DISC control about 5 or 6, in order to search in the Mono-Tone mode while rejecting ferrous objects.

VII. DETECTING TECHNIQUES

Gold Maxx is a motion detector, which means that metallic target detection can only be carried out when the search coil is moving.

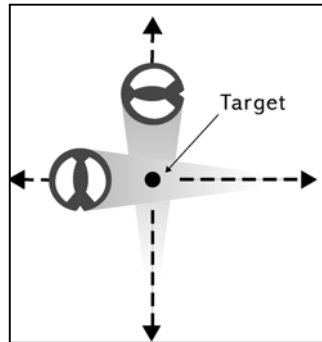
When you detect an area, it is important to sweep with the head as close as possible to the ground with wide sweeps, but not making contact with the ground.

Keep the head parallel to the ground following the relief as much as possible.



To pinpoint a target, use quick crossed sweeps, with the coil over the target. Taking note of where the strongest audio signal is received.

This strongest signal is in a line from front to back of the Coil, the exact location of target can be found by 'x' ing



VIII. CARE INSTRUCTIONS

Our detectors are designed to be as robust as possible. However, like any electronic precision instrument, they require some care.

The XP search coil cable has been designed so as to resist long term movement. However you should take some precautions and prolong the life of your detector:

- ⇒ to remove the connector from its base, it is important never to pull the cable but the connector.
- ⇒ It is important to leave enough slack at the bottom of the cable near the coil to allow for adjusting the coil angle without placing strain on the coil.
- ⇒ It is important not to replace the Velcro with adhesive which would prevent it from sliding, and would centre the movement on one single part of the cable.
- ⇒ when the box is hipmounted, put it on your side or on your back in order not to fold the cable of the connector when you lean forward. (Diagram 1)
- ⇒ when the box is hipmounted, to prevent strain on cable and connector, you should slide the cable through the hipmount bag belt strap. Diagram 2

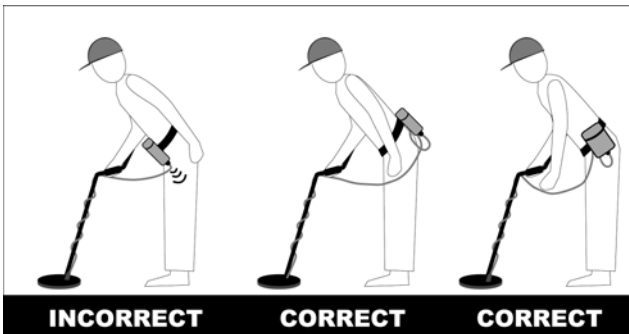


Diagram 1

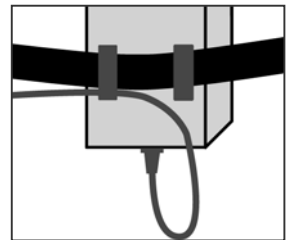


Diagram 2



Not adhering to these precautions will lead to long term damage of the cable and void the warranty due to user negligence.

- ⇒ *In the event of nonprolonged use, remove the batteries from the detector*
- ⇒ *Do not expose your detector to high temperatures*

IX. TROUBLE SHOOTING PROBLEMS

TROUBLE	CAUSES	SOLUTIONS
You hear a series of beeps with a regular interval.	⇒ Low batteries.	Change the batteries .
	⇒ Wrong polarity	Check if you have correctly inserted the batteries in each pack. One battery might be in the wrong position.
You can't start your detector.	⇒ Batteries are badly inserted or upside down.	Check the way the batteries have been inserted in the 2 battery holders (refer to chapter IV)
	⇒ A 6.35 plug is inserted in the headphone plug.	Remove it.
	⇒ The loudspeaker is defective.	Plug in headphones to check.
You notice excessive false signals without reasons	⇒ The sensitivity is too high.	Lower it.
	⇒ The search coil connector is badly locked to the control box	Lock it without forcing.
	⇒ Your headphone cable is defective.	Change the headphones.
	⇒ You are passing through an area with a lot of interference (high voltage cable, electric transformer, electric fence).	Lower the sensitivity or get away from this area.
	⇒ You are close to other metal detectors.	Move away or lower the sensitivity.
You notice false signals when the search head knocks the ground.	⇒ GROUND control is too low.	Turn the GROUND control slightly to the right until false signals stop.
The detector beeps on pottery & "hot rocks"	⇒ GROUND control is too low.	Turn the GROUND control slightly to the right until false signals stop.

If the problem persists, contact your retailer

X. ADVICE TO DETECTORISTS

Detecting is an activity, which like other leisure activities require some guiding principles. These few recommendations will allow you to fully enjoy detecting while respecting laws, environment and people.

- *Enquire about and abide by the laws in force of the country or the state before searching. It is of your responsibility to know them and to abide by them.*
- *Always ask the permission of owners or to the caretaker of the places where you want to search.*
- *Have regard for the natural environment on which you are searching and the places you will go across.*
- *Backfill all holes you dig.*



Avoid detecting in zones where battles took place during wars. Report any suspect object you might discover to the authorities

XI. SPECIFICATIONS

BATTERIES

8 AA Alkaline batteries or rechargeable batteries (optional).

ELECTRONICS BOX

ABS electronics box. It can be worn under the armrest or hip-mounted.

SEARCH COIL

Wide scan (Double D), Waterproof, Diameter : 9" (22.5 cm), provided with coil cover.

Cable length : 2.35 m



Gold Maxx search heads are not compatible with those of other XP metal detectors because of their specific frequency (18kHz).

SHAFT

3 parts which can be dismantled, fibreglass lower stem

LOUDSPEAKER

28 mm, 8 ohms, Weather resistant

HEADPHONES

Jack 6.35 - Impedance 8/16/32 ohms.

Backphone with audio level adjust provided.

FREQUENCY

18000 HZ

WEIGHT

Box	340 gr
Head with cable	480 gr
Head + shaft + control box + hipmount bag + backphone	1425 gr
Full package	2100 gr

WARRANTY

Electronic Control Unit _____ *2 years parts and labour*
Search coil and charger _____ *1 year parts and labour*

XII. XP ACCESSORIES



Searchcoil DD High Energy 11" (27 cm)
provided with coil cover

Standard Searchcoil DD
9" (22.5 cm)
provided with coil cover



Elliptical Search coil
5" x 10" (11/24cm)
provided with coil cover

*Available summer 2004 :
Searchcoil DD 45x38 cm*



**Hipmount
bag**



XP T-shirt
100% cotton
Sizes M, L, XL

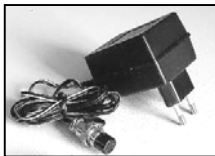


XP Cap



XP Backpack

Batteries Charger



Batteries



Backphone FX-01

- Audio level adjust
- Impedance and sound adapted to our detectors
- 6.35 jack adaptator
- Foldable in 3 parts



**XP - 100 : optional accessory use to
fix the electronic box on the shaft
in front of the handle.**

WARRANTY CONDITIONS

XPLOMER ensures a contractual warranty from the date of the purchase.

- ▶ 24 months on the electronic box
- ▶ 12 months on the search coil, detector shaft and its components (armrest, twist lock...) and on the battery charger.

If warranty service should be necessary, the detector must be returned to the reseller, complete, with proof of purchase and a notice explaining the fault. You are responsible for the postage.

Where a faulty detector has been replaced by a new or reconditioned detector, the warranty will carry on.

This warranty (parts and labor) does not cover:

- ▶ damage due to a fall, shock or accident,
- ▶ deteriorations due to an anormal use,
- ▶ degradations due to non-respect of use conditions specified in the instruction manual, cable breakage of the search coil or of one of its conductors,
- ▶ the coil cover.

Any manipulation of the electronic circuit by an unauthorised person will lead to breach of warranty.

XPLOMER reserves the right to change the characteristics or specifications of its detector without notice.



www.xpmetaldetectors.com

Web site

e-mail info@xpmetaldetectors.com

XPLOMER S.a.r.l. - 40 chemin du moulin - 31320 MERVILLA (France)
Fax : + 33 (0)5 61 73 48 39

XP and Gold MAXX are XPLOMER S.a.r.l. trade marks